

# UJ6 series

## Photovoltaic Modules

|              |             |
|--------------|-------------|
| <b>235Wp</b> | PV-UJ235GA6 |
| <b>230Wp</b> | PV-UJ230GA6 |
| <b>225Wp</b> | PV-UJ225GA6 |
| <b>218Wp</b> | PV-UJ218G6  |
| <b>212Wp</b> | PV-UJ212G6  |

Mitsubishi Electric is a global leader in providing superior-quality photovoltaic modules to businesses and residences around the world. With more than 35 years experience in the photovoltaic industry, we manufacture products that are designed and built for optimal efficiency and reliability. With a name like Mitsubishi Electric, you can be sure you're getting the best.

### Excellent Workmanship

For more than three decades, we have been perfecting our PV modules to bring you the highest quality products possible. Superior craftsmanship, engineering excellence and attention to the finest detail ensure longevity and optimal performance.

- Lower slope of module frame prevents accumulation of dust
- Straight tabs ensure integrity of electrical connections
- 25-year warranty guarantees power output

### High Power Output

Our modules are designed with high efficiency and high power output in mind to utilize limited space while giving you a higher return on investment.

- Unique 4 bus bar cell design increases efficiency
- Power tolerance of  $+3/-3\%$
- High power output in real life conditions
- Solder-free cells for increased efficiency
- Bypass diode maximizes power output in shaded conditions
- Back film and high-transmittance glass to aide in increased light absorption

### Safe, Durable and Easy to Install

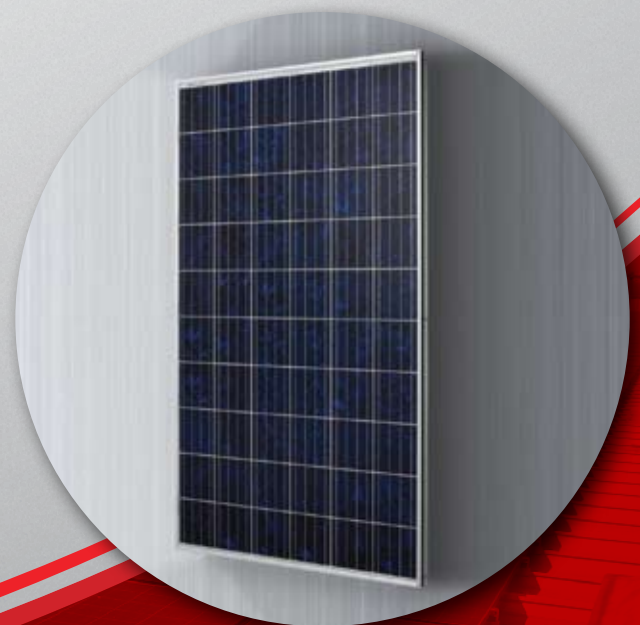
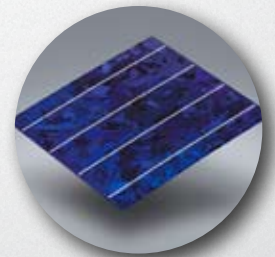
Engineered to withstand tough outdoor conditions, our modules are among the most durable in the industry. Designed for fast and easy installation, Mitsubishi Electric solar panels are lightweight and include the latest safety features.

- Four layer junction box for additional safety
- Lightweight (44 lbs) for a faster, safer installation
- Corrosion-resistant anodized frame
- New frame design strengthens module and eases installation
- Tempered glass and locking connectors for safety
- Additional grounding options reduce installation time

### Eco-friendly

From our manufacturing process to our recyclable packaging, we have made a true commitment to protect the environment. For us, it's not just the end product that counts, but the entire production cycle.

- 100% lead-free solder in all of our modules
- ISO 14001 certified for eco-friendly manufacturing processes
- Minimal cardboard packaging and recyclable steel pallets



Technical Specifications

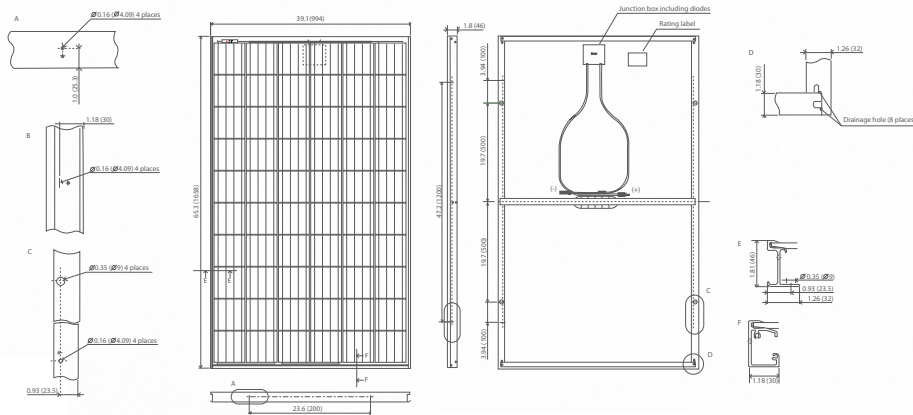
**MITSUBISHI  
ELECTRIC**  
SOLAR ELECTRIC INNOVATIONS

# Mitsubishi Electric Photovoltaic Module

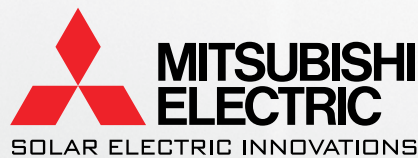
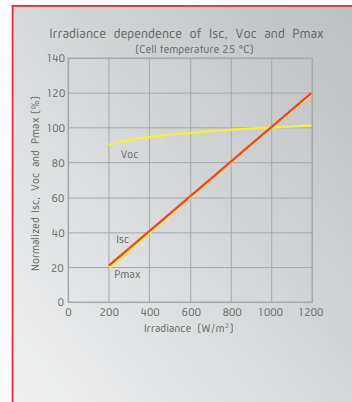
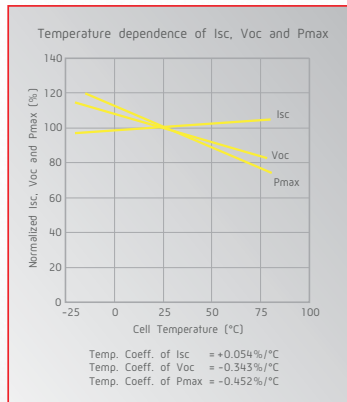
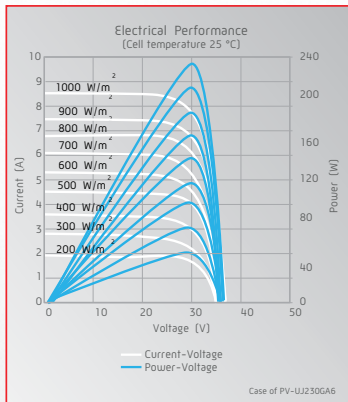
## Specification Sheet

| Manufacturer                                       |  | MITSUBISHI ELECTRIC |             |            |            |  |
|--|--|---------------------|-------------|------------|------------|--|
| Model name   | PV-UJ235GA6  | PV-UJ230GA6         | PV-UJ225GA6 | PV-UJ218G6 | PV-UJ212G6 |  |
| Cell type  | Polycrystalline Silicon, 156 mm x 156 mm   |                     |             |            |            |  |
| Number of cells                                    | 60 cells in a series   |                     |             |            |            |  |
| Maximum power rating (P <sub>max</sub> )           | 235Wp  | 230Wp               | 225Wp       | 218Wp      | 212Wp      |  |
| Warranted minimum P <sub>max</sub>                 | 228.0Wp  | 223.1Wp             | 218.3Wp     | 211.5Wp    | 205.6Wp    |  |
| Tolerance of maximum power rating                  | +3/-3%   | +3/-3%              | +3/-3%      | +3/-3%     | +3/-3%     |  |
| PV USA test condition rating (PTC)                 | TBD  | TBD                 | TBD         | TBD        | TBD        |  |
| Open circuit voltage (V <sub>oc</sub> )            | 36.8V  | 36.6V               | 36.4V       | 36.3V      | 36.1V      |  |
| Short circuit current (I <sub>sc</sub> )           | 8.49A  | 8.39A               | 8.30A       | 8.25A      | 8.13A      |  |
| Maximum power voltage (V <sub>mp</sub> )           | 30.5V  | 30.2V               | 30.0V       | 29.3V      | 29.0V      |  |
| Maximum power current (I <sub>mp</sub> )           | 7.71A  | 7.62A               | 7.50A       | 7.44A      | 7.31A      |  |
| Static load test passed                            | 5,400 Pa   | 5,400 Pa            | 5,400 Pa    | 2,400 Pa   | 2,400 Pa   |  |
| Number of bus bar per cell                         | 4 Bus bars   | 4 Bus bars          | 4 Bus bars  | 2 Bus bars | 2 Bus bars |  |
| Module efficiency                                  | 14.3%  | 14.0%               | 13.7%       | 13.2%      | 12.9%      |  |
| Normal operating cell temperature (NOCT)           | 47.5 degree C - Under evaluation   |                     |             |            |            |  |
| Maximum system voltage                             | DC 600V  |                     |             |            |            |  |
| Fuse rating  | 15A  |                     |             |            |            |  |
| Dimensions   | 65.3 x 39.1 x 1.81 inch (1658 x 994 x 46 mm)   |                     |             |            |            |  |
| Weight   | 44 lbs (20kg)  |                     |             |            |            |  |
| Number of modules per pallet                       | 20   |                     |             |            |            |  |
| Number of modules per container (40 ft. container) | 560  |                     |             |            |            |  |
| Packing contents                                   | 2 pcs - 1 carton   |                     |             |            |            |  |
| Output terminal                                    | (Positive) 1025mm (Negative) 1025mm with MC connector (PV-KBT4/6 II-UR, PV-KST4/6 II-UR) |                     |             |            |            |  |
| Certifications                                     | IEC 61215 2nd Edition, UL 61730, conforms to UL 1703                                     |                     |             |            |            |  |
| Fire rating  | Class C  |                     |             |            |            |  |

## Drawings and Dimensions Unit: inch (mm)



## Electrical Characteristics



Mitsubishi Electric & Electronics USA, Inc.  
 5665 Plaza Drive, Cypress, CA 90630-0007  
 Telephone: 714-220-2500 Email: pv@meus.me.com  
[www.mitsubishielectricsolar.com](http://www.mitsubishielectricsolar.com)