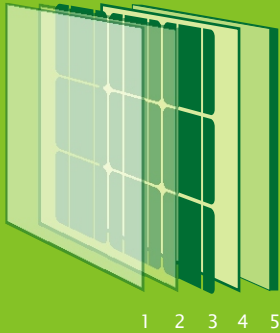




**ASTRO**energy

A CHNT COMPANY

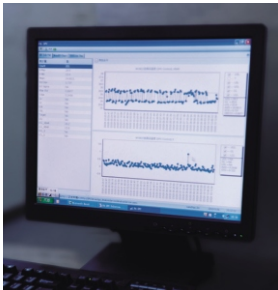
# CHSM 6610P



- 1 Glass
- 2 EVA
- 3 Cell Array
- 4 EVA
- 5 Backsheet

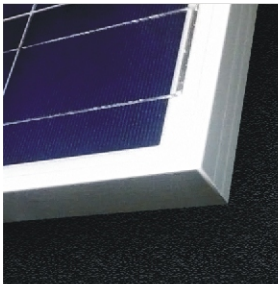
AVAILABLE WATTAGES	215	220	225	230	235	240
--------------------	-----	-----	-----	-----	-----	-----

## Precision Solar Cell Manufacturing



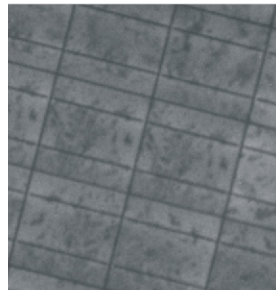
- First PV company in mainland China to use Manufacturing Execution System in solar cell production. The equipment and manufacturing processes are strictly monitored using Statistical Process Control to ensure top-performing, high-quality solar cells.

## Aesthetic Appeal



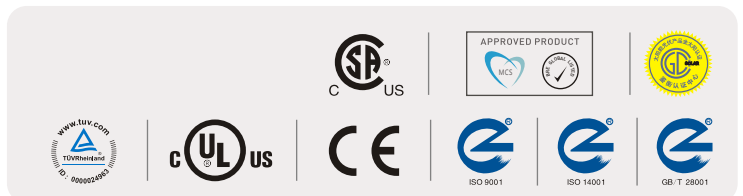
- Modules are assembled with high quality, smooth aluminum alloy frames.

## State-of-the-Art Solar Module Manufacturing



- Within the same power range and efficiency, cells are further sorted by current at maximum peak power in order to minimize losses caused by electric mismatch.
- IV and EL tests are performed before lamination to ensure product's quality and reliability.
- The EL test is repeated on each module before shipping to ensure the consistency of encapsulated cells and process reliability.

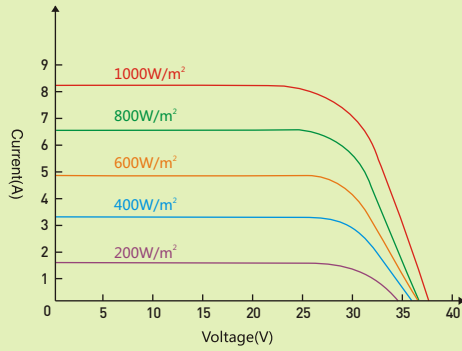
- Warranty conditions
- 5 years product warranty
- 25 years performance guarantee (90% up to 10 years, 80% up to 25years.)



## CHSM 6610P

## Electrical Characteristics

### Electrical Characteristics



Pmax(Wp)	215	220	225	230	235	235
Isc(A)	7.96	8.12	8.27	8.43	8.58	8.73
Voc(V)	36.65	36.77	36.88	37.00	37.11	37.23
Imp(A)	7.23	7.38	7.55	7.69	7.84	7.98
Vmp(V)	29.65	29.70	29.76	29.81	29.85	30.07
Tolerance(Wp)	±3%					
Max. System Voltage(V)	DC1000V for SC II and DC600V for USA NEC					
NOCT	47±2°C					
Power Temp. Coeff(/°C)	-0.469 %					
Current Temp. Coeff(/°C)	0.052 %					
Voltage Temp. Coeff(/°C)	-0.344 %					
Ambient Temp. (°C)	-40~85					
Static Max. Mechanical Load(Pa)	2400					
Series Fuse Rating (A)	15					
Measured Standard Test Conditions	1000 W/m² Irradiance, AM1.5 Spectrum, Module Temperature of 25°C					

## Dimensions and Mechanical Data

Length	1652 mm / 5.420 feet	Width	994 mm / 3.261 feet
Height	45 mm / 0.148 feet	Weight	20 kg / 44.0 lbs
Cell Type		156×156 mm Polycrystalline Silicon	
Cell Matrix	6×10	Cell Number	60 pcs in a series
Frame		Aluminum Alloy	
Output Terminal	(+)-1000 mm/ (-) 1000 mm with MC4 compatible or original connector		

## Front and Back Views

Front View	Side View	Back View	Frame Cross Section