

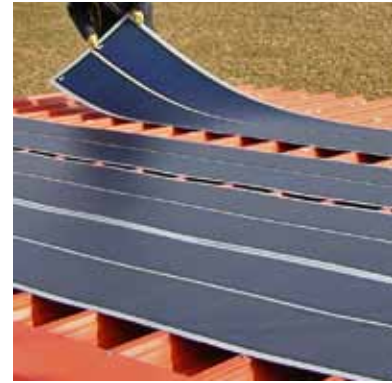


Module

# TF Plate Professional

thin-film

288 Wp



## The solar roofing system for large and industrial buildings

TF Plate Professional - made from thin-film cells of leading manufacturer UNI-SOLAR®, in combination with coated, durable Prelaq NOVA metal sheets.

### Advantage:

Efficient use of diffuse radiation in spite of low roof angles and unfavourable building alignments.

- Easy mounting on trapezoidal sheet metal
- Optimum yields due to use of the advanced Triple Junction technology
- Suitable for less than ideal roof alignments
- Long-lived due to the use of top quality materials
- Suitable for large projects
- Makes use of existing substructures
- Quick installation (fast „plug and play“)
- Safe and easy electric connection due to pin-and-socket connectors



## TF Plate Professional

### Electrical data\*

Module Type	TFP 288	
Nominal Power ( $P_{MPP}$ ), $\pm 5\%$	144 Wp	
Nominal Voltage ( $U_{MPP}$ )	33 V	
Nominal Current ( $I_{MPP}$ )	4.36 A	
Open Circuit ( $U_{OC}$ )	46.2 V	
Short Circuit ( $I_{SC}$ )	5.3 A	
Temperature Coefficient of $P_{MPP}$ ( $P_{MPP,T}$ )	-0.3 W/K	-0.21 %/K
Temperature Coefficient of $U_{MPP}$ ( $U_{MPP,T}$ )	-102 mV/K	-0.31 %/K
Temperature Coefficient of $I_{MPP}$ ( $I_{MPP,T}$ )	4.36 mA/K	0.10 %/K
Temperature Coefficient of $U_{OC}$ ( $U_{OC,T}$ )	-176 mV/K	-0.38 %/K
Temperature Coefficient of $I_{SC}$ ( $I_{SC,T}$ )	5.3 mA/K	0.10 %/K

NOCT 46°C

At standard test conditions (1,000 W/m<sup>2</sup>, spectrum AM 1.5, cell temperature 25 °C). During the first 8-10 weeks of operation, electrical output exceeds specified ratings: Power  $P_{MPP}$  +15%, Open Voltage  $U_{OC}$  +11%, Short Circuit  $I_{SC}$  +4%.

\* Electrical data refer to one submodule, the module consists of two separately interconnectable submodules.

### Dimensions and weight data

Length, ( $\Delta L$ -0/+2 mm)	5586	mm
Width, ( $\Delta W$ -0/+2 mm)	867	mm
Weight	44	kg
Misplacing Measure	transversely arranged	

### Quality features

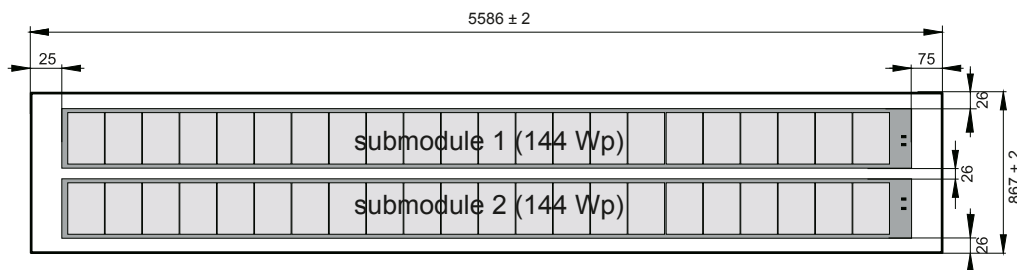
Tolerance of Nominal Power	$\pm 5\%$
Performance guarantee**	20 years to 80% of rated nominal power
Product guarantee**	5 years
Max. system voltage	1000 V

\*\* According to the Centrosolar guarantee conditions (incl. product and performance guarantee).

### Construction features

Solar Cell	amorphous silicon triple junction solar cells
Construction	laminates bonded on metal plates
Frontside	highly transparent ETFE-Polymer
Backside	coated Prelaq Nova metal plate
Junction Box	protection class IP 65
Bypass diodes	Schottky bypass diodes
Connection Cable	2 x 0.5 m, pin-and-socket connector system
Application	trapezoidal roofing material

specifications subject to change without notice, 08/2009



Protection Class II



CENTROSOLAR AG  
Behringstrasse 16  
22765 Hamburg  
GERMANY  
phone: +49 (0)40 391065-0  
fax: +49 (0)40 391065-99  
hamburg@centrosolar.com

CENTROSOLAR AG  
Otto-Stadler-Strasse 23  
33100 Paderborn  
GERMANY  
phone: +49 (0)5251 50050-0  
fax: +49 (0)5251 50050-10  
paderborn@centrosolar.com

CENTROSOLAR AG  
Karlsberger Strasse 3  
87471 Durach  
GERMANY  
phone: +49 (0)831 540214-0  
fax: +49 (0)831 540214-5  
durach@centrosolar.com

www.centrosolar.com