

Module

S-Class Excellent

monocrystalline

180 Wp ■ 190 Wp ■ 195 Wp



Premium Quality - Made in Germany

S-Class Excellent modules are designed and produced in our factory in Wismar. Rely on premium quality made in Germany, saving the natural resources that belong to all of us. Become your own eco-friendly electricity producer and enjoy the freedom of maximum safety for your investment.

The S-Class Excellent is being produced in order to fulfill the highest standards and to endure even extreme climatic conditions: ice, hail, snow, storm, high humidity and intense thermal fluctuation. Neither prolonged heat nor extreme cold can harm the S-Class Excellent. It always reliably uses the optimum of the available light to gain the highest yield possible.

The S-Class Excellent modules consist of 50 monocrystalline high-performance solar cells. They transform light to power perfectly, even in case of diffuse irradiation and in months with less sunshine. Due to the anti-reflective solar glass the S-Class Excellent harvests more kWh for you – especially when the sun is low and the sky is cloudy. It's that simple when you stick to the best.

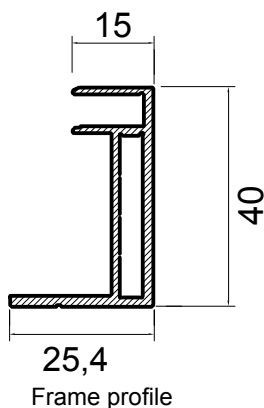
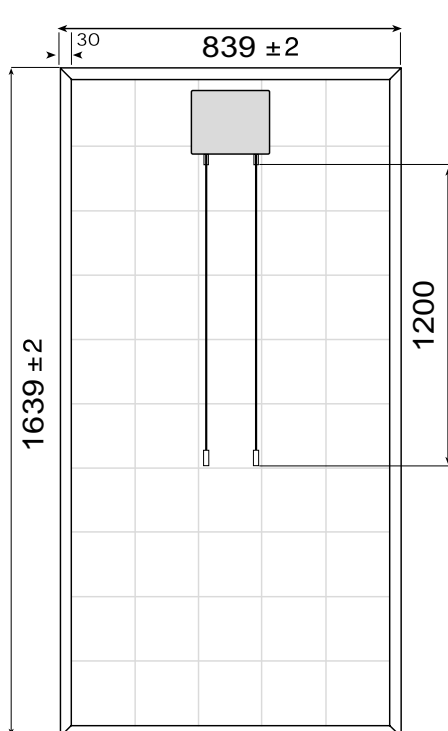
We make your quality standards our own. Thus each and every Centrosolar module is inspected and measured individually. Each S-Class Excellent module only gets its unchangeable serial number when all test criteria are fulfilled. We document this by granting a performance guarantee of 26 years. Thus we secure your money from the beginning!



S-Class Excellent monocrystalline

'Made in Germany' makes the difference

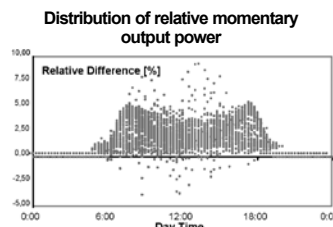
- More than 15 years of experience in solar module production
- Manufactured under high quality standards according to ISO 9001:2000
- Anti-reflective coating for increased output
- Unchangeable serial number (laminated onto the front side)
- Tested and qualified by VDE according to IEC 61215 Ed. 2 and protection class II
- CE compliant
- Passed salt spray test according to DIN EN ISO 9227-NSS
- Individual measurement of every single module after production
- Thermally pre-stressed solar glass guarantees highest transmittance and stability



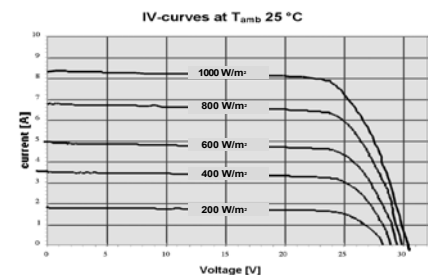
Technical Data

| | S 180M50 Excellent | S 190M50 Excellent | S 195M50 Excellent |
|---|--|-----------------------|-----------------------|
| Nominal power (P _{mp}) (STC) | 180 Wp | 190 Wp | 195 Wp |
| Solar cell | monocrystalline | | |
| Cell dimension | 156 x 156 mm | | |
| Number of cells | 50 pcs | | |
| Rated Voltage U _{mp} | 24.05 V | 24.15 V | 24.20 V |
| Open circuit voltage U _{oc} | 30.30 V | 30.50 V | 30.60 V |
| Rated current I _{mp} | 7.48 A | 7.87 A | 8.06 A |
| Short circuit current I _{sc} | 7.96 A | 8.33 A | 8.51 A |
| Temperature coefficients ΔP _{mp} | -0.43 %/K | -0.43 %/K | -0.43 %/K |
| Temperature coefficients ΔU _{oc} | -0.36 %/K | -0.36 %/K | -0.36 %/K |
| Temperature coefficients ΔI _{sc} | 0.027 %/K | 0.028 %/K | 0.028 %/K |
| Power tolerance | ± 3% | | |
| Other electrical tolerances | ± 10% | | |
| NOCT (normal operating cell temperature) | 46 °C | | |
| Operating temperature | -40...+85 °C | | |
| Product Guarantee* | 5 years | | |
| Performance guarantee* | 10 years 90%, 26 years 80% | | |
| Length x height x width | 1639 x 40 x 839 mm | | |
| Solar glass | 3.2 mm with anti-reflective treatment | | |
| Junction box | Spelsberg, easy to maintain | | |
| Bypass diodes (Schottky) | 3 pcs, 10 A | | |
| Solar cable | Huber + Suhner, 'Radox', electron-beam cross-linked insulation and coating | | |
| Cable diameter | 4 mm | | |
| Cable length | 120 cm | | |
| Cable connectors | Huber + Suhner, 'Twist-lock', for up to 55 A | | |
| Maximum system voltage | 1,000 V | | |
| Frame ** | anthracite-coloured, powder-coated hollow aluminium alloy profile | | |
| Weight | 16.5 kg ± 0.5 kg | | |

* According to the Centrosolar Guarantee conditions (incl. Product and Performance Guarantee)
 ** Available also as unframed laminate.



The M-curve means more - due to anti-reflective solar glass.



Technical details subject to change without notice due to constant advancement. All data are without guarantee.

CENTROSOLAR AG
 Behringstrasse 16
 22765 Hamburg
 GERMANY
 phone: +49 (0)40 391065-0
 fax: +49 (0)40 391065-99
 hamburg@centrosolar.com

CENTROSOLAR AG
 Otto-Stadler-Strasse 23c
 33100 Paderborn
 GERMANY
 phone: +49 (0)5251 50050-0
 fax: +49 (0)5251 50050-10
 paderborn@centrosolar.com

CENTROSOLAR AG
 Karlsberger Strasse 3
 87471 Durach
 GERMANY
 phone: +49 (0)831 540214-0
 fax: +49 (0)831 540214-5
 durach@centrosolar.com