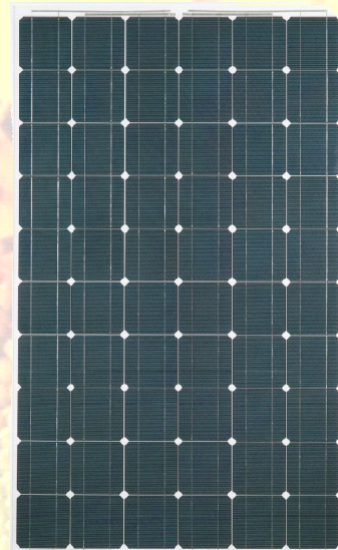




AS-6M30 Amerisolar

Amerisolar's photovoltaic modules are designed for large-scale electrical power requirements. With a 25 year warranty, the AS-6M30 offers high-power and reliable performance for solar projects, both on- and off-grid.

- Solar Cells: High efficiency solar cells ensure high performance of the solar module and create maximum power output.
- Low-Iron Tempered Glass: High transmittance glass with an Anti-reflective coating increase the power output and mechanical strength of the solar module.
- Aluminum Frame: Screw-less corner joints provide superior rigidity. Ten predrilled mounting holes ease installation.
- Superior Junction Box: Multi function junction box with water proof capabilities.
- Long Lifespan: ≥ 25Years.
- Tolerance: ±3%.
- High impact resistance affords superior performance during severe weather – high wind, driving rain, heavy snow and hail.
- Moisture proof and corrosion-resistant.
- Carries certificates from International Agencies: CE, TUV, UL, IEC, MCS and Korea Certificate.



WARRANTY

- Product: 10 years
- Power Output:
90%----10 years
80%----25 years

Electrical Characteristics

<i>P_{max}, V_{oc}, I_{sc}, V_{mp} and I_{mp} at STC (1000W/m², 25±2°C, AM 1.5);</i>						
Maximum Power (P _{max})	200W	210W	220W	230W	240W	250W
Open Circuit Voltage (V _{oc})	36.2V	36.4V	36.6V	36.9V	37.1V	37.4V
Short Circuit Current (I _{sc})	7.50A	7.80A	8.10A	8.31A	8.52A	8.73A
Maximum Power Voltage (V _{mp})	29.6V	29.8V	30.0V	30.2V	30.3V	30.4V
Maximum Power Current (I _{mp})	6.76A	7.05A	7.34A	7.62A	7.92A	8.22A
Module Efficiency (%)	12.1	12.7	13.3	13.9	14.5	15.1

Temperature Coefficients

Temperature Coefficients of Pm	-0.47 %/°C
Temperature Coefficients of Voc	-0.38 %/°C
Temperature Coefficients of Isc	+0.04 %/°C
Temperature Coefficients of Im	+0.04 %/°C
Temperature Coefficients of Vm	-0.38 %/°C

Absolute Maximum Limits

Maximum System Voltage	600V DC
Module Operating Temperature	-40°C to +85°C
Noct (DEGC.)	47°C±2°C



Passionately committed to delivering innovative energy solutions



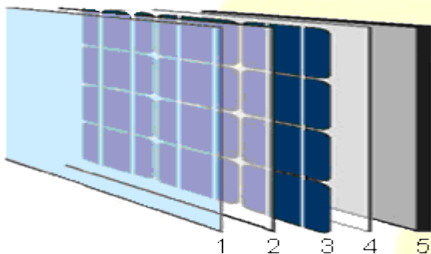
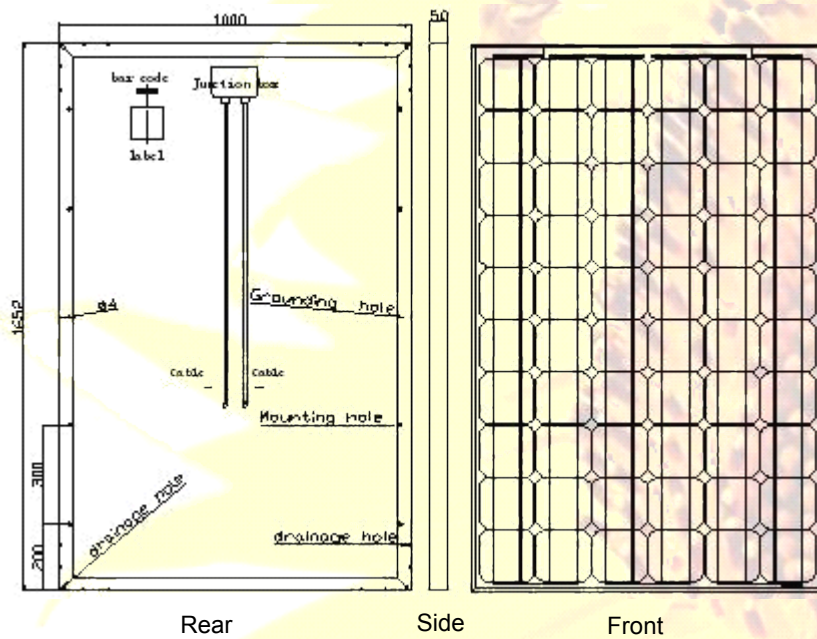
Worldwide Energy and Manufacturing USA, Inc.

Mechanical Characteristics

Cell Technology	156mmx156mm [6.14in x 6.14in]	Mono-crystal silicon
Number of Cells (Pcs)	60 (6x10)	
Dimensions	1652mmx1000mmx50mm [65.04in x 39.37in x 1.97in]	
Weight	22kg [48.4lb]	
Frame	Anodized Aluminium Alloy	
Length of Cables (mm)	900mm [35.43in]	
Allowable Hail Load	227g steel ball dropped from 1m height	
Surface Maximum Load Capacity	60m/s Wind or 540kg/m ²	

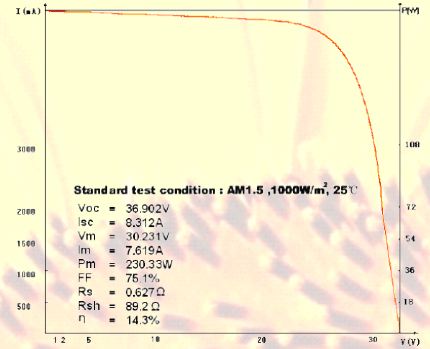
Basic Dimensions

ALL DIMENSIONS IN mm

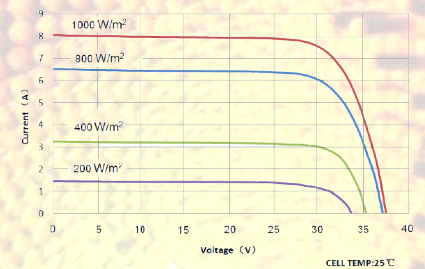


1. Front: tempered solar glass 3.2mm
2. EVA
3. 60 high efficiency solar cells
156mm X 156mm
4. EVA
5. Rear: laminate (weatherproof and waterproof)

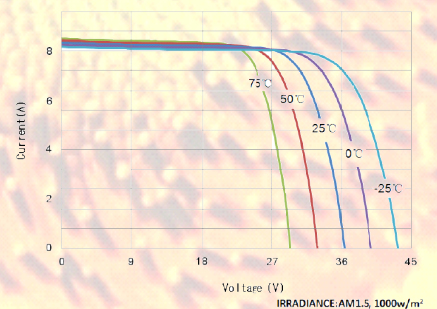
I-V curves



Module at STC



Various Irradiance Levels



Various Temperatures

Worldwide Energy and Manufacturing USA, Inc.

408 N. Canal Street Unit A & B, South San Francisco, CA 94080

Tel : +1-650-794-9888

Fax : +1-650-794-9878

[Http://www.wwmusa.com](http://www.wwmusa.com)

E-mail : solarsales@wwmusa.com